



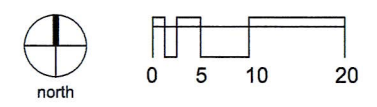
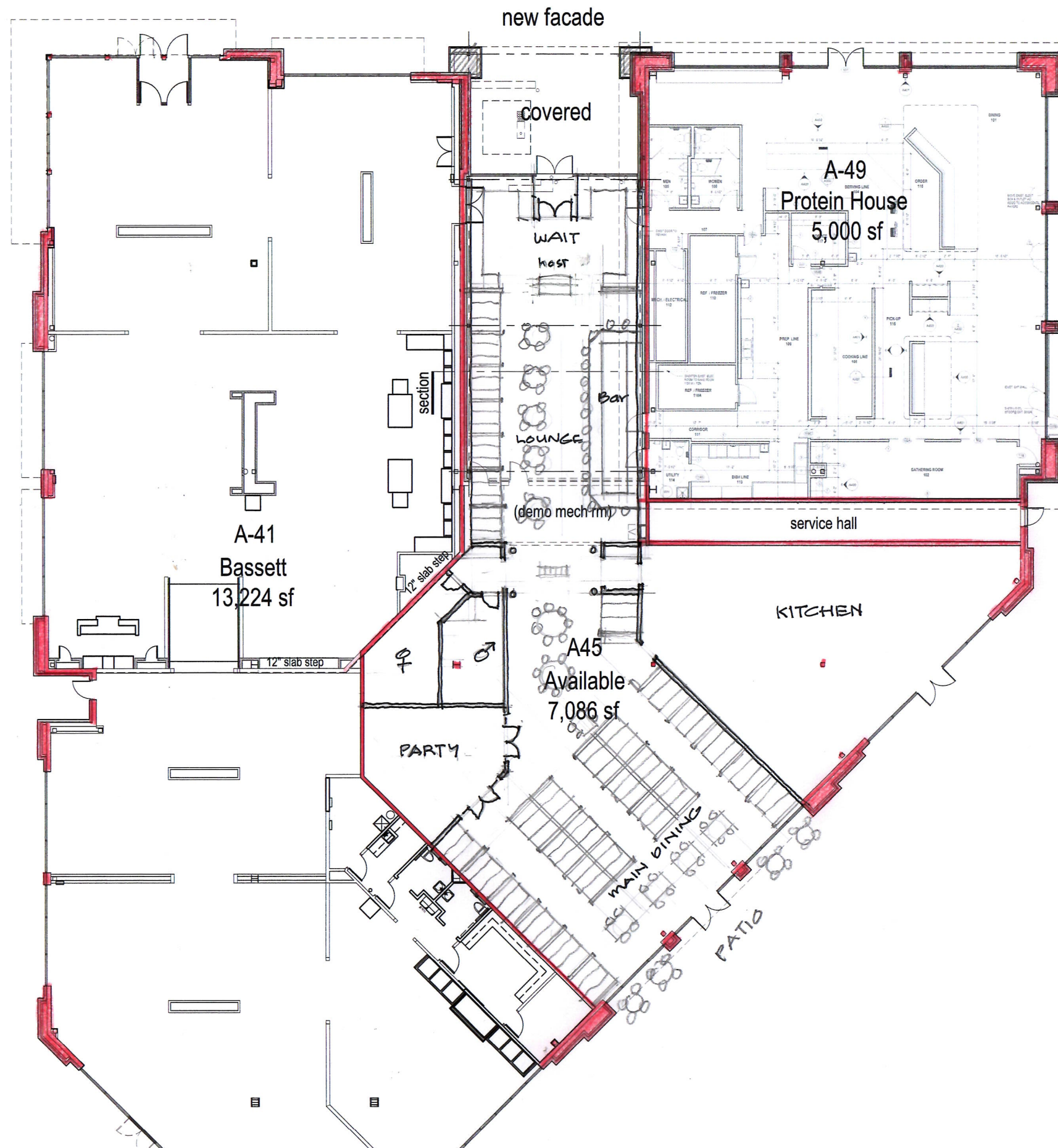
BUILDING A-2

CORBIN PARK, 6801 W. 135th Street, Overland Park, Kansas

Proposed North Elevation
December 23, 2019

Carson Development, Inc.

DeGasperi & Associates Architecture

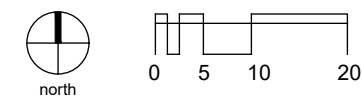
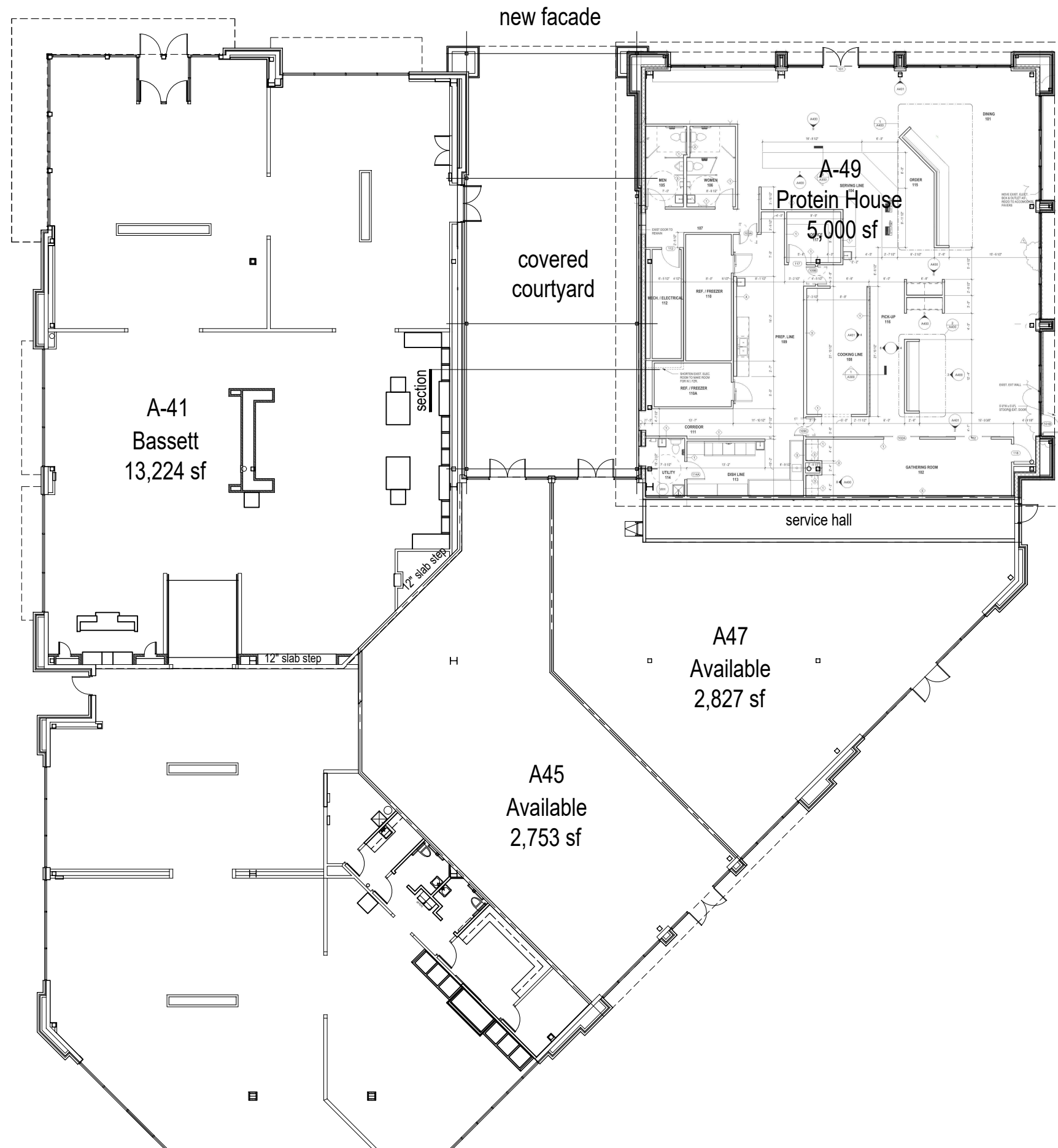


Floor Plan Option A
December 26, 2019

BUILDING A-2

CORBIN PARK, 6801 W. 135th Street, Overland Park, Kansas

Carson Development, Inc.
DeGasperi & Associates Architecture



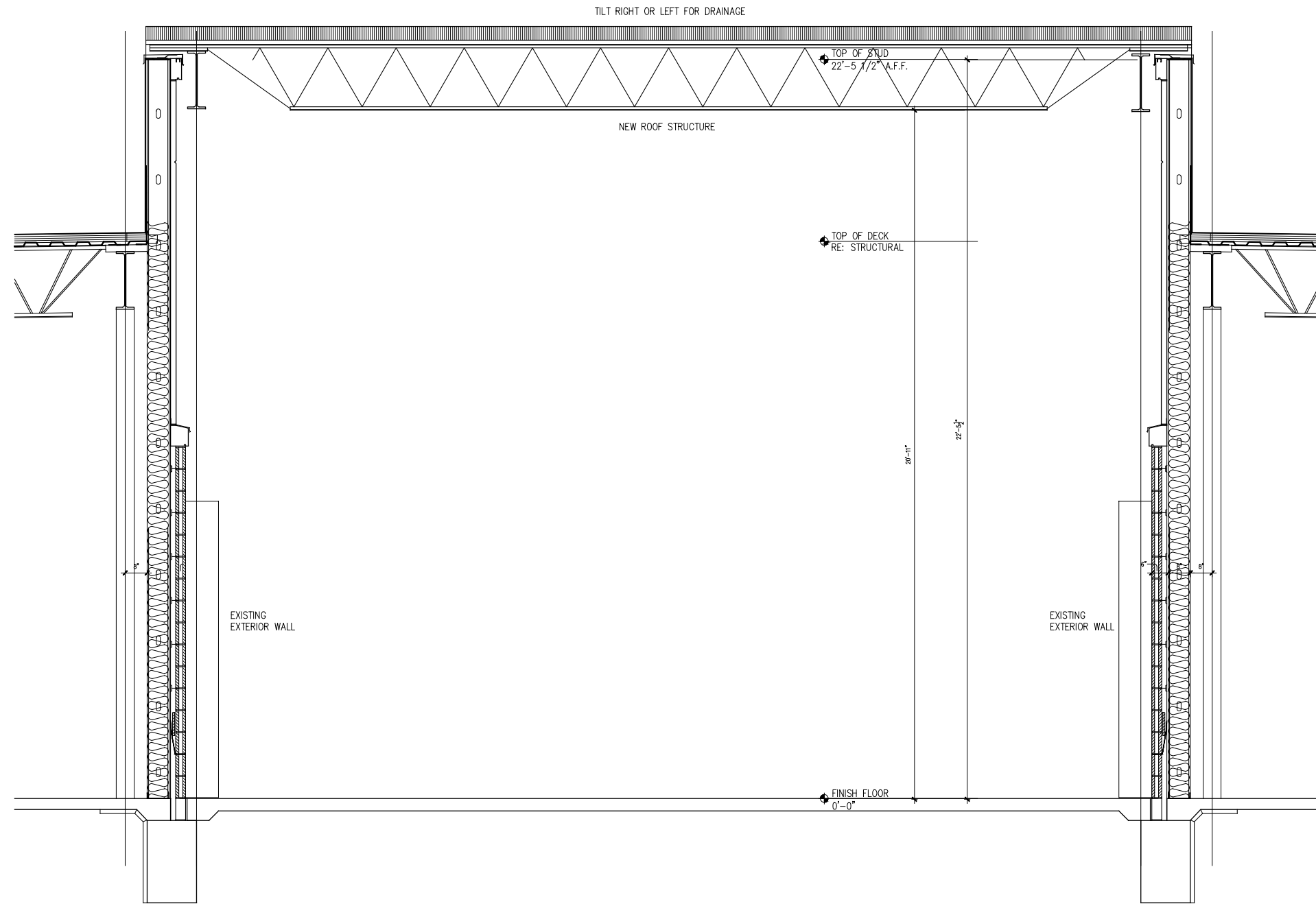
Floor Plan Option B
December 29, 2019

BUILDING A-2

CORBIN PARK, 6801 W. 135th Street, Overland Park, Kansas

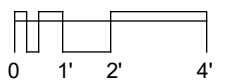
Carson Development, Inc.

DeGasperi & Associates Architecture



Building Section Option A

December 23, 2019

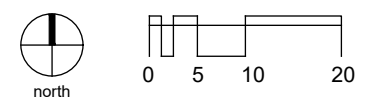
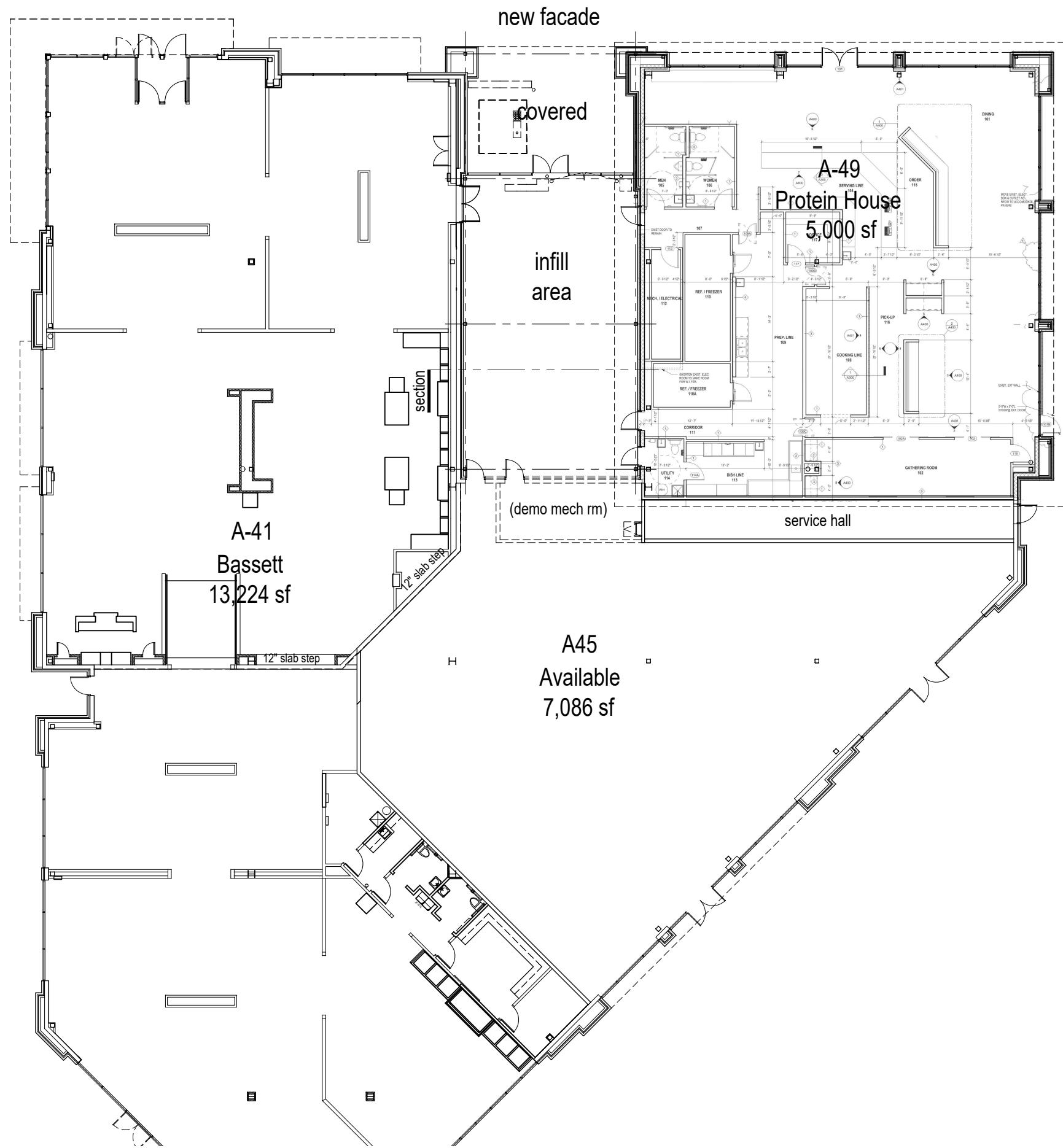


BUILDING A-2

CORBIN PARK, 6801 W. 135th Street, Overland Park, Kansas

Carson Development, Inc.

DeGasperi & Associates Architecture



Floor Plan Option A
December 26, 2019

BUILDING A-2

CORBIN PARK, 6801 W. 135th Street, Overland Park, Kansas

Carson Development, Inc.

DeGasperi & Associates Architecture